



**McKinney airport expansion good for the economy**

Page 3



**Douglass Center gets a new team**

Page 2



**NAACP embraces hip-hop generation**

Page 9

# The Gazette

A Division of  
**MON**  
Minority Opportunity News, Inc.

SERVING PLANO, DALLAS, RICHARDSON, ALLEN, MCKINNEY AND FRISCO

Volume X, Number XIV

"The Paper of Choice"

July 15-31, 2001



## On the Homefront:

Continuing throughout the year, "Story time for 4 and 5 Year Olds" will be held Mondays and Tuesdays at the Barns and Noble at the Plano location at 801 W. 15th St. at 10 a.m. For more information call, 972-422-3372.

The RCT Theatre presents "The Secret Garden" from July 20th - 22nd at the UTD Theatre in Richardson. Through the magic of Lucy Simon's music and Frances Hodgson Burnett's timeless novel, this play creates a world where lost loves are found, lost lives are saved, spring comes alive, and beauty reigns. Ideal for the entire family. Tickets are \$9 for adults and \$7 for children and can be ordered by phoning 972-690-5029.

"The DFW High Tech Fair Career Expo," will be held at 11 a.m. - 2 p.m. and 4 p.m. - 7 p.m. at the DoubleTree Hotel and Executive Meeting Center in Plano. For more information call, 972-977-2335.

## INSIDE

- On the Homefront . . 1
- Community Spotlight 2
- Editorials . . . . . 3
- Inspiration . . . . . 3
- You & Your Money . . 4
- Capitol Watch. . . . . 4
- Ethnic Notes . . . . . 5
- Internet News . . . . . 6
- On the Move. . . . . 8
- Strategy . . . . . 8
- Arts & Ent. . . . . 9
- Around the Town . . 10

## Collin County locals come face to face with rising state and national unemployment rates

By Angela D. Jones

Now that her visiting family members are gone, Rita Adefope knows that there is much work to be done. She describes the task before her as much like a fishing expedition. "You throw your line out there and your resume is your bait. You might get a good catch, but then again you might get nothing," she says.

It's been about a month and a half since Adefope was laid off from her job at Nortel in Plano, where she has been gainfully employed for the past five years. Nortel is just one of the latest casualties in the unemployment wars, and joins the list of companies who have been forced to cut costs - in the form of layoffs.

At the state level, the Texas Workforce Commission reported that Texas' seasonally adjusted unemployment rate rose two-tenths of a percent to 4.5 percent in May. The number of unemployed

Texans also rose 17,200 over the month, causing the increase in the unemployment rate.

"While the unemploy-

ment rate did increase, approximately 260,000 more Texans were employed in May compared to the same period last year," said TWC Chair Diane Rath. But for people like Rita Adefope, her husband, who could also be affected by

layoffs; and their daughter, who is starting college - these numbers don't mean much; especially when faced with the dilemma of being

thrust back into an unstable job market. "Whether you expect it or not, you're always surprised when a layoff happens to you. At first you get very angry; so much so that you want to write to the president of the company and tell him how you feel," explains

Adefope. "But then you think 'for what, it wasn't personal,' so then you pick yourself up onto your feet and do what you have to do."

While no statistics are currently available at the city level; locally, Collin county labor force estimates for the month of May also show an increase in the number of civilians who are unemployed in the Plano, Frisco, McKinney, Allen and surrounding area. Out of 297,577 in the Collin County labor force, 9,124 were listed as unemployed in May, whereas last May only 5,741 were unemployed in a labor force of 283,542. The unemployment rate increased from 2 percent to 3.1 percent.

Sandra Cam is a recruiter with The Maxim Group in Allen, which specializes in the Information Technology/Telecom industry. She does recruiting for Collin County and other Metroplex companies, including Nortel. With over four years in the recruiting field, Cam says that the job market is the worst she's seen since 1991.

See UNEMPLOYMENT Page 5



## The sandwich generation: exhausted but making do

By RANDY SCHMID  
Associated Press Writer

WASHINGTON (AP) - Caught between caring for elderly parents and young children, many in the baby boom generation are feeling the squeeze on their time and energy.

"The sandwich generation are very strong willed women. They are freedom fighters. They get the day care, they find the baby sitter. They are exhausted but they do it," said homemaker Frances Caster. Caster, 50, who lives in the Bronx borough of New York City, is raising her grandchildren and frets over her elderly parents in Puerto Rico. Her story reflects the experience of many 45- to 55-year-old boomers, studied in a survey released Tuesday by AARP, the organization for people 50 and over.

The survey of 2,300 Americans found many

squeezed but not overwhelmed by trying to care for young and old. Some 74 percent said they are able to handle family responsibilities. But the burden doesn't fall evenly across society, the study found. The group most likely to be caring for parents or other older adults were those born outside the United States, at 43 percent compared to 20 percent of people born in this country.

Among Asian-Americans, 42 percent care for the elderly, compared to 34 percent of Hispanics, 28 percent of blacks and 19 percent of non-Hispanic whites.

"In today's multicultural America, we see new, non-nuclear family arrangements that find many boomers sandwiched between extended family and non-family members. Caregivers today may be assisting not only their own children and parents but also grandchildren, nieces, nephews and even children of friends and neigh-

bors," said Bill Novelli, AARP executive director.

Helping a distant elder can be especially trying, as Caster knows. Her mom is 74, dad is 76, both are diabetics, they have no car and must walk down a mountainside to

catch the bus to the grocery store. "My main concern is not being able to take as good care of them as I should," she said of her parents. She calls them constantly and mails them clothing and household supplies. "We feel it is our responsibility. They took care of us, why not take care of them?" she said.

Some 48 percent of those polled shared her concern that they should be doing more for elderly parents. The most active caregivers, Asian Americans, expressed the most guilt, 72 percent, followed by Hispanics, 65 percent, blacks, 54 percent and whites, 44 percent.

Nonetheless, 69 percent of

the people polled felt their children should help care for them in old age. That ranged from whites, 72 percent; blacks, 68 percent; Hispanics, 60 percent and Asian Americans, 49 percent. The survey has a margin of error of plus or minus 2.5 percentage points.

In releasing the survey the AARP included a series of proposals it said could assist caregivers. These included:

- Increased workplace flexibility.
- Adding prescription drug coverage to Medicare and strengthen Social Security.
- Caregivers programs should offer multi-lingual staff and find other ways to serve diverse populations.
- Greater coordination of services for families and people needing long-term care.

## Plano child's play turns deadly

By: Denise Edwards  
Assignment Editor

"On a 95-degree day which is an average summer day in Texas, a vehicle's interior can reach temperatures as high as 181-degrees Fahrenheit," said Rose Rougeau, spokesperson for AAA Texas. That became a frightening and fatal reality for the Plano family of 3-year-old Cory Clark who was discovered unconscious inside the family Suburban on the afternoon of Wednesday, July 11. Plano Police were called to the residence of 3940 Los Robles to help Fire Department paramedics who were already on the scene administering CPR to 3-year-old Cory. He was subsequently rushed to the Medical Center of Plano where he was later pronounced dead. According to Plano Police officials, "Cory had apparently been playing inside the vehicle while the other family members were inside the residence." No one knows for sure how long Cory was inside the SUV but family members think it was less than 20 minutes total. Who would have ever thought that a child at play crawling into a car would lead to such tragic circumstances?

Most of the time you hear about children and pets being mistakenly left unattended in a car or truck while their parents are at the mall or running errands. As little as 10 minutes is all it takes for a vehicle's temperature to reach fatality levels of 120-degrees for children, senior citizens and pets. Any vehicle with glass windows could become a potential coffin. Sunscreens and sunshades that you see displayed in cars and trucks everywhere do nothing to lower temperature levels they only keep the dashboard and steering wheel from becoming too hot to handle. How fast your vehicle heats up on the inside "depends on the material of the interior," says Rose Rougeau of AAA Texas. Leather seats heat up at a faster rate than cloth seats. Nevertheless, vehicle safety tips are important during the summer months and AAA Texas suggests:

- \* Park in the shade if possible
- \* Be careful when getting into a vehicle with leather interior. (If it gets too hot you could possibly burn yourself)
- \* Keep your windows cracked when you are not in the vehicle to allow some ventilation
- \* Allow vehicle to cool off (with a door open or window down) before you drive off



## Douglas Center Hotshots take the court



The Douglass center Hotshots get together for the camera

By: Keysha Hogan

During the summer many North Texas youths are on vacation, at a camp or inside enjoying daytime television. All of those activities were rolled into one at the Douglas Center in Plano. There's a special group of 13 young women, ages 11 and up, who have come together to play basketball and set an example for the other kids in their communities. They practice weekdays from 3 - 5 p.m. and compete against the boys in

the Douglas Center's Friday Night League. Their team name is the Hot Shots and they come to the center to socialize, play ball and stay safe. "There is always something going on out there," said Eunice Phillips, who plays the post, "and I just feel safe here, no violence."

Their coach Keith Russell has been the Douglas Center Recreation Coordinator for the past 4 years. Not only does he teach these young women to be equals on the court but in the classroom as well.

Lessons such as teamwork, commitment and focus are taught on a daily basis. "The kids at the center get the opportunity to do lots of things they wouldn't usually get a chance to do, like playing in this league and taking college tours in the area," said Russell.

At the center many other activities are held such as cooking classes, day camps, and field trips around town for all ages throughout the year. "I'm glad the center is here, it helps give other people

more of an advantage that don't live in the new areas of town," said Jessica Durr who plays the point guard and wing positions. This is many of the girls second or third year for participating in sports at the center, and they all hope to return and play during the upcoming school year.

For more information about youth activities in Plano, please call 972-941-7174.



The Hotshots in action at the Douglas Center

## Plano residents celebrated the 4th of July by gathering for a parade

Photos by Joe Black



**St. John Missionary Baptist Church**

1701 W. Jefferson St. • Grand Prairie, TX 75051  
(214) 264-1483  
Worship Services 7:00, 9:00 & 11:15 A.M.

**1 CHURCH - 2 LOCATIONS**

Rev. Denny D. Davis, Senior Pastor

2805 Market Loop, Suite 300  
Southlake, TX 7692  
(817) 488-2114  
Worship Services 10:00 A.M.

**St. John Baptist Church North**  
"Family Fellowship"

**DEPRESSED AGAIN?**

The Department of Psychiatry at the University of Texas Southwestern Medical Center of Dallas is conducting research sponsored by the National Institute of Mental Health on cognitive therapy for depression. **Treatment is free.** The symptoms of depression include:

- Depressed or sad mood
- Loss of interest in activities
- Difficulty sleeping or sleeping too much
- Feeling slowed down
- Feeling tired or having low energy
- Feeling guilty or worthless
- Changes in weight or appetite
- Difficulty concentrating

If you have experienced these symptoms more than once in your life, are drug free and not currently in psychiatric treatment, please call the Psychosocial Research and Depression Clinic at 214-648-5351.

**RAMADA-INN Market Center**

**LAMAR VINES**  
GENERAL MANAGER  
Feel free to contact me and I will personally take care of your Hotel needs.

**Our features include:**

- 350 spacious guest rooms, suites and elegant penthouses
- A location convenient to downtown, the West End, Market Center, Las Colinas, Restaurant Row and the Galleria
- Fourteen meeting rooms with over 22,000 square feet of meeting and banquet space.
- Free shuttle service to Market Center, Love Field and area offices.
- A friendly, hospitable staff to welcome you back again...and again...AND AGAIN...

Ramada Market Center  
1055 Regal Row  
Dallas, Texas 75247  
Phone (214) 634-8550  
Fax (214) 951-7463  
Reservations  
800-441-3318

*Investing in our Communities*

**LEGACY BANK**  
Make it easy on yourself

ALLEN • CARROLLTON • FRISCO • MCKINNEY • PARK CITIES • PLANO

www.legacytexas.com • 972-461-1300

Member FDIC

## SOUTHWESTERN

NOTICE TO CONTRACTORS OF PROPOSED TEXAS HIGHWAY IMPROVEMENT CONTRACTS

Sealed proposals for highway improvement contracts will be received by the Texas Department of Transportation (TxDOT) until the date(s) shown below, and then publicly read.

**CONSTRUCTION / MAINTENANCE CONTRACT(S)**

District: Dallas  
Contract 6071-95-001 for REPAIR/UPGRADE METAL BEAM GUARD FENCE in DALLAS County will be received on August 7, 2001 at 1:00 pm at the State Office for an estimate of \$876,125.00.

Plans and specifications are available for inspection, along with bidding proposals, and applications for the TxDOT Prequalified Contractor's list, at the applicable State and/or District Offices listed below. Bidders must submit prequalification information to TxDOT at least 10 days prior to the bid date to be eligible to bid on a project. Prequalification materials may be requested from the State Office listed below. Plans for the above contract (s) are available from TxDOT's website at www.dot.state.tx.us and from reproduction companies at the expense of the contractor.

NPO: 3920

State Office  
Construction Division  
200 E. Riverside Dr.  
Phone: 512-416-2540

District Office(s)  
Fort Worth District  
District Engineer  
2501 Southwest LP820  
Ft Worth, Texas, 76133  
Phone: 817-370-6500

Minimum wage rates are set out in bidding documents and the rates will be part of the contract. TxDOT ensures that bidders will not be discriminated against on grounds of race, color, sex, or national origin.

**STOP**

Look No Further!

**Hobby Lobby**  
Store Management Opportunities

Hobby Lobby is a leader in the Arts & Crafts industry with over 260 stores located in 24 states.

Candidates must have previous retail store management experience in: supermarket chain, craft chain, mass merchant, drug chain, building supply chain.

**Hobby Lobby**  
7707 SW 44th Street  
Oklahoma City, OK 73179  
Attn: Bill Owens  
or apply Online @  
www.hobbylobby.com

**The Gazette**

**Do YOU have the right stuff?**

**MON the Gazette** is interviewing for **CUSTOMER SERVICE and MARKETING** personnel.

Salary plus commission.

- Must be a selfstarter
- Must be computer literate.
- Must have transportation.
- Must be ambitious & driven to succeed

**Fax resume to 972/881-1646 or call Mgr. at 972/606-3891**



## McKinney is on it's way to flying high

There is little argument that the City of McKinney is experiencing unprecedented growth and expansion. For many reasons, ranging from the quality of the schools to the overall quality of life, the community continues to attract new residents and businesses each day. Increasingly, in the mix of factors fueling this development, is the economic impact and benefit of the McKinney Municipal Airport.

Much has been made over the years about the "multiplier effect" that airports have on their local and regional economies. The airport's community relations director comes readily armed with all the arguments—more employment opportunities; greater accessibility to the world; any community that wants to take its rightful place in the nation's economy must have an airport to attract new business and industry.

"Airports are a fantastic economic generator," said Roger Harris, chairman of the McKinney airport's board. "I've heard it compared - one corporate jet - to the equivalent of an eight-story office building,

as far as tax revenue generated annually."

The airport is an integral part of the community's economic engine. Besides the jobs and income it provides directly, the airport is instrumental in the creation of community income by business and industry that use general aviation (i.e., non-airline) transportation to facilitate their operations. Most corporations would never locate a plant, headquarters, or distribu-

the community. In study after study, airports' positive economic impacts far outweigh any local public funding an airport may receive.

Because virtually all airports, large and small, are important elements of the national air transportation system, special taxes on the flying public fund grants-in-aid for construction and maintenance of runways and other infrastructure. This brings more money into the communi-

### Economic Summary

| 1998  | Services  |
|---|---|
| \$9.94 million Economic Impact              | Rental Cars-\$122,000 gross                               |
| \$4.69 million payroll                      | Federal/State Contributions                               |
| 157 Jobs                                    | 1998-2000   |
| \$835,000 off airport visitor contributions | \$4,884,348 Federal Contributions for Capital Improvement |
| \$727,000 Total Tax Revenues                | \$50,000 State Contributions for Routine Maintenance      |
| 2000  | Businesses Attracted                                      |
| \$414,000 School Tax                        | Montgomery Kone Elevator 65 Jobs                          |
| \$173,000 General Revenues                  | Dynacore-95Jobs   |
| \$727,000 Total Tax Revenues                | Encore Wire-120Jobs                                       |
| 2008  | Blockbuster Entertainment Group-800 Jobs                  |
| \$85.59 million Economic Impact             | Governor utilizes Airport                                 |
| \$27.97 million payroll                     |   |
| 510 Jobs                                    |   |

tion center in a community without a nearby airport.

In addition to direct spending by airport users, businesses, and local industry, the multiplier effect of airport economic benefits spread throughout

ty, making the airport one of the best civic bargains available.

The local airport is also the community's link to the national and international air transportation network.

See FLYING Page 6



Ron Shaw

As I was having lunch with a close personal friend, they said to me, "Ron, you're a good partner". I asked them why they said that. We were discussing some business issues and the conversation drifted toward relationships. As we continued our discussion, I found myself, as I always seem to do, giving a short lesson on partnerships. I asked them what kind of friends they had and how they assessed their friend's partnership because it dawned on me that most people don't really know how to select good partners and that most people don't know how to be a good partner, which is why so many find themselves miserable in their relationships. They are not good partnerships from the beginning. The Bible has much to say about the subject for a variety of reasons. (1) We were not meant to live alone. God said it's not good for man (kind) to be alone. So to deal with man's alone-ness, he made a suitable helpmate for him. Not only was she for him but also he was for her. The reason for this partnership was to fulfill God's assignment to man of being fruitful, multiplying, having dominion and domination. Man was to rule the planet but not to do it as one. (2) Even after the Advent of Christ and the birth of the new testament church, according to 1 Corinthians 12, we who are Christians are to function as partners within the context of the whole body of Christ. In short, God made us to be part-

## What kind of partner are you?

1 Cor. 3:8

ners and then recreated us to be partners. Either way, we were not meant to be without partnerships. No one person is the sum total of what they need to live. God expresses himself in a variety of people.

What is a partner? Simply put, one who participates or shares. Our text says that we are fellow workers with God. This means we are God's partners. We are not partners because He can't do without us, but rather because of His selection of us as partners. In other words, God, although He knew you, still chose you to be His partner. That means that either God makes poor choices, or He knows something about us that we don't know. Think about it for a minute. Knowing you with all of your flaws and faults, would you choose yourself as a partner to run the universe? Could you be depended upon to make sure the sun rises at the same time and in the same place every morning, no matter what the weather was? Some people can't even make it to work on time or they have the audacity to call in sick if they don't feel like going to work that day. Allow me to share with you some helpful hints on selecting good partners in life.

Who makes good partners? (1) Those who share common goals, vision, beliefs. That is to say they are headed in the same direction. Don't be unequally

yoked. In order for there to be a good partnership, all partners have to be going towards a common destination. (2) Those who have complimentary strengths. For some strange reason, we've allowed our differences to separate us. However, it's our differences that should strengthen us. If you have the same strengths as your potential partner, your weaknesses will be your undoing. Our different strengths should solidify us not divide us.

What is expected of partners? (1) To carry their load or do their part. That's why we call them part - ners. They have a significant part to supply. Whenever you have a partner not doing their part, you have weakened partnership. (2) Partners are expected to be faithful. Faithfulness consists of trustworthiness, loyalty and consistency. Those who would be partners can't afford disloyalty or sporadic, wishy washiness or be untrusting and untrustworthy. Finally, partners are expected to share in the benefits of the partnership. That's what is so incredible about God. He expects us to do our part, be faithful to Him and share in the benefits of our partnership with Him.

Now, I ask you, what kind of partner have you been and what kind are you now?

## Texas to Avoid California Electricity Shortage

New Customer Brochure explains differences in the Texas and California electricity markets

AUSTIN - July 10, 2001 - The Public Utility Commission of Texas (PUC) and Texas Electric Choice announced today the availability of an educational brochure that explains why Texas will not experience California-style blackouts and electricity price spikes. Titled "Texas is Different from California," the brochure informs electric customers that the lights will stay on in Texas because we have plenty of power reserves, diverse sources of power and a strong

infrastructure to support competition.

"Texas is implementing competition before deregulation to ensure that we get it right," said PUC Commissioner Brett Perlman. "In other parts of the country, there are legitimate causes for concern about the energy infrastructure. But Texas has a strong infrastructure to meet our needs for electricity, even during a hot Texas summer."

Many areas of the United States have experienced strong

economic growth in recent years. Questions are being raised about the supply of electricity primarily because new infrastructure to produce and deliver electricity has not kept pace with the new homes and businesses that use electricity in our growing economy. In Texas, new power plants have been built to supply electricity for our growing economy. Texas has also structured the competitive market to encourage competition among Retail Electric Providers (REP) and given them the tools to offer stable prices to customers.

The brochure explains that Texas has plenty of power to keep up with the rising demand for electricity. More than 50 new power plants have been built or are currently under construction in Texas since 1995 and 31 more are in the planning stages. California, on the other hand, has built only two power plants since 1995. Texas gets its power from diverse sources, whereas California relies on hydroelectric power for 25 per-

cent of its electricity needs. Therefore, during dry conditions, California is susceptible to electricity shortages.

In 1999, the Texas Legislature passed a law that introduces retail competition in electricity beginning in January 2002. This law gives Texans the power to choose a Retail Electric Provider (REP) - the company that provides their electricity. Customers of Texas' investor-owned utilities will be able to shop for a REP - giving Texans more control over their electricity buying decision. The PUC will continue to enforce customer protections and regulate the delivery of electric service to ensure safety and reliability.

To obtain a copy of the "Texas is Different than California" brochure, or for additional information about Texas Electric Choice, customers may contact the Texas Electric Choice answer center toll free at 1-866-PWR-4-TEX (1-866-797-4839). Customers may also download a copy of

the brochure from the [www.powertochoose.org](http://www.powertochoose.org) web site.

### 10 Ways Texas Differs from California

- 1.+ More than 27 new power plants have been built in Texas since 1995, with another 27 under construction and 31 more in the planning stage.
- 2.+ Only two new power plants have been built in California since 1995.
- 2.+ It takes approximately two years to build a new power plant in Texas.
- California has a long and difficult licensing process, where power plants take six to seven years to complete.
- 3.+ Most areas of Texas have little ability to export or import electricity to and from other states. The electricity from most of the new power plants in Texas will be consumed in Texas.
- California historically imports 25 percent of its electricity from other states.
- 4.+ Texas produces elec-

tricity, utilizing a diversity of fuel sources, including natural gas, coal, nuclear energy, wind and others.

- California is dependent upon hydropower for 25 percent of its power needs. California's power supply is vulnerable to dry conditions.

5.+ The Texas market allows REPs to enter long-term contracts for power, to help shield customers from price increases.

- California did not allow long-term contracts. This forced electric providers there to buy power in a daily market, where they often had to pay high prices when demand was high.

6.+ Texas is aggressively building transmission lines to interconnect new power plants, maintain reliability and give REPs many choices in where they buy power.

- California has significant transmission constraints that limit the ability to move power

See Electricity Page 5

## The Gazette

6100 Avenue K, Suite 105 • Plano, Texas 75074

Chairman Emeritus  
Jim Bochum

Publisher  
Thurman R. Jones

Assistant to the Publisher: Tezlyn Figaro-Turner

MON-The Gazette  
formerly Minority Opportunity News, was founded July, 1991,  
by Jim Bochum and Thurman R. Jones

Sales Department: (972) 509-9049 Fax: (972) 509-9058

Sales/Marketing Email: [trj@swbell.net](mailto:trj@swbell.net)  
Account Executive: Jerri Hillis

Account Executive: Dorothea Marsh

Editorial Department: (972) 516-4191 Fax: (972) 516-4197

Editorial Email: [mon-edit@swbell.net](mailto:mon-edit@swbell.net)

Interim Assignment Editor: Denise Edwards

Staff Writers:

Brandy Jones  
Keysha Hogan

Contributing Writers:

Glenda Goodson  
Lakeisha Joe  
LaTrina George  
Angela Jones  
Monica Thornton

Graphic Designer:  
Christine Jester

Columnists:

John Dudley  
Ron Shaw  
Ed Bamberger  
Ester Davis

Staff Photographers:

Stan R. Davis  
Maggie Ybarra

Interns:

Kandice Stanton

MON-The Gazette assumes no responsibility for unsolicited material and reserves the right to edit and make appropriate revisions.

To submit  
a letter to  
the editor:

Send all correspondence to:

MON-The Gazette  
Letters to the Editor  
6100 Avenue K, #105  
Plano, TX 75074  
Fax: 972-516-4197





## Explosive growth for the City of Plano

By Lakeesha Joe

The community of Plano began its existence with most of its early settlers migrating from Kentucky and Tennessee in the early 1840's in the Republic of Texas. Since that time Plano has flourished into the city that we see today with huge residential and business growth.

"According to the most recent Census Reports, Plano's population went from approximately 128,000 to 222,000," said Jeff Zimmerman, the city's planning and information manager. "Plano has also seen an increase in certain minority categories, particularly in the Hispanic and Asian population."

The City of Plano's General information report indicates that the city has earned a national reputation as one of the best places in the country for employers to do business and for families to live and work. Also, in 1997, Plano was named the 4th most "Kid-Friendly City" in the United States based on the findings of the Children's Environmental Index. This index is a comparison of 219 United States cities that was compiled by Zero Population Growth to determine the relationship between quality of life and population for the nation's children. The City of Plano was also named the safest city in the United States based on the most recent Federal Bureau of Investigation crime statistics.

Due to such high honors given to the city of Plano and its welcoming of newcomers with open arms, its residential and business populations con-

tinue to grow rapidly. Impressed by the careful planning and development of the Plano area, many professionals and executives continue to move into the city.

"Plano has had phenomenal growth which really began in 1968," said council member Ken Lambert. Plano's increasing growth has caused an imbalance amongst its four districts, which according to a city ordinance may require redistricting to balance the districts.

In 1996, when the districts were redrawn, the city of Plano adopted an ordinance requiring a review of the districts every five years and the rule allowing districts to be redrawn when the population difference between districts reaches the 25 percent mark.

"We've been asked, as a staff, by the City Council to look at the population based on the 2000 Census Reports and try to bring the four districts into closer balance population wise," said Zimmerman. "We will try to keep District 1 as much in tact as possible because it represents an area where the homes in the neighborhood are a lot older than other areas and it has a big minority make up."

Zimmerman said that they would deal more with preservation and conservation in District 1, which is just west of Central Expressway, starting at Alma Drive and goes east of the city limits. District 1 and District 2, located in western Plano, both have about 50,000 residents. District 3, which is the largest district in population, located in north-central Plano has 67,734 resi-

dents. District 3's population is 25 percent larger than any of the other three districts and still has more room to grow. District 4 is the smallest Plano district, with a population of 49,617 residents and because it is located in the landlocked south-central section of Plano, it has little potential for future growth. Recent census numbers indicate that there is a 37 percent difference in the population between District 3 and District 4.

Because of Plano's growing population, its City Council has discussed adding a ninth council seat. Council member Lambert said that adding a ninth council seat would help to settle issues without encountering deadlock votes. Currently, without a ninth council seat, deadlock votes can occur.

Plano's growth during the last two decades is mainly the result of its big business attitude and its excellent accommodation of business industries. Growth trends in the residential, commercial and manufacturing construction markets have continued in 2001. According to Plano's demographics reports, the city issued 1,905 single-family permits in 2001, with an average value of over \$200,000. The average home was 3,787 square feet in size, and over 75 percent of the permitted houses were larger than 3,000 square feet in size. In 2000, the city issued permits for non-residential construction valued at \$476,804,943, which explains the city's exploding growth, causing an imbalance of its four council districts.

## Should you be thinking of refinancing your mortgage?



John Dudley

Mortgage interest rates have been on a roller coaster ride in recent years. When rates came down significantly after late 1994, many homeowners with older, fixed-rate mortgages sought refinancing with a lower rate loan. Some with adjustable-rate financing sought to lock in a low fixed rate for the long term or refinance to a lower variable rate.

Refinancing a home mortgage can result in significant monthly savings in mortgage costs. A rule of thumb says that refinancing makes sense if the current mortgage rate is at least two percentage points lower than your existing mortgage rate and you plan to stay in the home for at least two years. This "rule" is based on the fact that you will incur new closing costs by refinancing.

In fact, the decision to refinance should not be made solely according to an arbitrary rule. Rather, it should be made only after undertaking a careful financial analysis.

The costs of refinancing — prepayment penalty (if any) on the old mortgage, application fees, appraisal costs, points (prepaid inter-

est), survey costs, recording fees, among other expenses — need to be taken into account. Some of these costs may be waived or refunded by the lender. You may also be able to save additional closing costs by refinancing with your current lender. Be sure to shop around to make sure you are getting the best overall deal.

After reviewing the costs of refinancing, weigh the income-tax consequences of refinancing. Be aware that refinancing may yield some unexpected tax write-offs.

\* If you pay a prepayment penalty, it may be deductible as mortgage interest.

\* If you incurred any mortgage points that you couldn't deduct in full when you took out the old mortgage, the points had to be amortized and deducted over the life of the mortgage. When you refinance that mortgage, the remaining unamortized points may be deducted in full.

Also consider that if your refinancing means paying less annual interest, you will have a smaller mortgage interest deduction for tax purposes. The result is that you may have to increase your withholding or estimated tax payments to account for the change.

If you are paying points on the newly refinanced mortgage, be advised that, unlike points paid on

your original home mortgage which may be fully deductible in the year paid, your refinancing-related points are generally amortizable over the life of the new loan.

Finally, you must determine whether to take out a fixed-rate mortgage or an adjustable rate mortgage. Each comes in a number of variations, and whether one form is preferable to another depends on factors such as the longer-term trend of interest rates and, more importantly, your personal circumstances. Deciding whether to refinance your mortgage requires careful analysis. If we can be of assistance, please let us know.

*Provided by courtesy of John Dudley, a Financial Advisor with First Union Securities in Dallas, TX. For more information, please call John Dudley at 214-740-3253. First Union Securities is a division of First Union Capital Markets Corp., Member New York Stock Exchange and SIPC, and a separate non-bank affiliate of First Union Corporation. (c) 1999 First Union Securities.*

*First Union Securities does not provide legal or tax advice. Be sure to consult with your own tax and legal advisors before taking any action that would have tax consequences.*

## The face of Texas is changing and so are we



Tiffani Price

**S**BC Communications — the San Antonio-based parent company of Southwestern Bell-Texas — spends more of its dollars with female- and minority-owned suppliers than any other U.S. company, according to a recent survey by *Working Woman* magazine.

In fact, SBC spent \$3.4 billion last year — that's 22 percent of its total purchases — with firms owned by minorities, women or service-disabled veterans.

Here in Texas, Southwestern Bell slightly bested the company average: 22.4 percent of our total purchases were made from minority-, female- and disabled veteran-owned enterprises.

At Southwestern Bell-Texas, supporting supplier diversity is one way we're illustrating our commitment to overall diversity. Through our workforce, our business practices and our community relationships, we're working to honor our differences — of race, gender and religion, as well as perspective, experience and approach.

Throughout the territories we serve, Southwestern Bell-Texas and SBC Communications:

employ the best people from all backgrounds and viewpoints to provide the products and services that best meet our customers' needs;

depend upon our vendor base of businesses owned by minorities, women and service-disabled veterans to provide the superior equipment and services that help make us a leading-edge global telecommunications provider; and

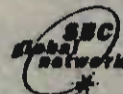
support the efforts of numerous employee-initiated organizations that celebrate diversity, as well as assist many minority initiatives through the SBC Foundation.

Of course, we know there's much more to do. But we believe there's only one way to lead — by example. Which is why we remain fully committed to setting the industry standard through the way we treat our employees, our business partners, our customers and our communities.

*Tiffani Price*

Tiffani Price  
Director  
External Affairs

Southwestern Bell



Take control and take action — visit [www.connecttexas.org](http://www.connecttexas.org).

## Are You Our Missing Link?

How To Connect Your Business To The State's Procurement Process

Economic Opportunity Forum 2001



What: Economic Opportunity Forum 2001

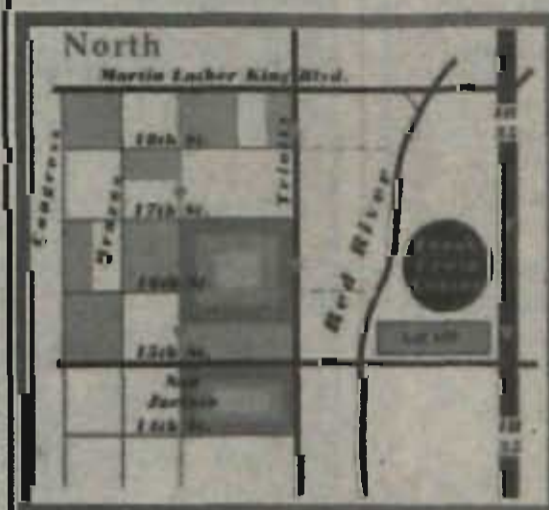
Location: Frank Erwin Center,  
1701 Red River, Austin, TX

Date: July 19, 2001

Time: 10a.m. – 4p.m.

Hosted By: General Services Commission,  
University of Texas at Austin, Texas Lottery Commission,  
Texas Youth Commission, Texas Department of Public Safety,  
Texas Department of Insurance, Texas Rehabilitation Commission,  
Health and Human Services Commission, Texas Department on Aging, and  
Interagency Council on Early Childhood Intervention

Map to  
Frank Erwin Center  
Park in Lot 108



Opportunities  
at the Forum will include:



For information contact one of the following persons: Jennifer Flores, GSC (512) 463-6958; Jose Montoya, TYC (512) 424-6256; Annette Smith, UT (512) 471-2850; or Joyce Bertolacini, TLC (512) 344-5293

Economic Opportunity Forum 2001



# Minimum wage then and now, Are we behind the times here in Texas?

By Brandy Jones

On Saturday, June 25, 1938, to avoid pocket vetoes 9 days after Congress had adjourned, President Franklin D. Roosevelt signed 121 bills. Among these bills was a landmark law in the Nation's social and economic development - the Fair Labor Standards Act of 1938 (FLSA). Against a history of judicial opposition, the depression-born FLSA survived more than a year of congressional altercation. It

## UNEMPLOYMENT

from page 1

"The market has been down since December and hasn't picked up, so we're really feeling the effects" she says. "We're in the business of hiring and we've even had layoffs of some of our internal employees and external contractors."

With an 18-year history under its belt, The Maxim Group had a 600-job layoff in March. Cam considers herself fortunate to still be employed.

She adds, "usually the IT and Telecom fields have pretty steady growth. In fact, last year this time we were hiring left and right. So far, it's been a steady slow but we're expecting the market to pick up during the first quarter of next year."

Statistics show that Transportation, Communications and Public Utilities added 1,400 more jobs in May, while Texas' largest industry, the Service industry, added 13,600 jobs in May. Commissioner for Employers, Ron Lehman, adds "Communications led the industry with an increase of 600 jobs. This second consecutive month of strong industry gains reflects a healthy annual growth of 4.5 percent."

While Nortel is among the leaders in the IT industry, Adefope says that in her casual surf of the internet, she has noticed a lack of jobs in the telecommunications industry. And while Nortel has offered assistance to the employees it laid off in the form of employee assistance programs, which offer emotional and strategical support, she doesn't see herself utilizing the resources of the company responsible for her recent demise.

"I know from past experiences that the best way to find a job is through connections," she says. "I'm the type of person that if I can't go back to the point that I was, then I'll do what I have to do to make sure that my family is taken care of - even if it means working at Wal-Mart."

Adefope was one of 30 people in her department affected by the recent layoff and has since been in touch with her former co-workers. "So far," she says, "two of them have found jobs." And while a lot of her concern lies with people like her co-worker who just had a baby and whose spouse was also facing a layoff, her main concern right now is her husband, who has been with Nortel for almost 20 years and could potentially face a layoff himself. But it is her faith in God that allows her to be strong for her family. "I know that God watches over us and I know that he has something better in store for me," she says.

banned oppressive child labor and set the minimum hourly wage at 25 cents and the maximum workweek at 44 hours.

In 1933, under the "New Deal" program, Roosevelt's advisers developed a National Industrial Recovery Act (NIRA). The act suspended antitrust laws so that industries could enforce fair-trade codes resulting in less competition and higher wages. On signing the bill, the President stated: "History will probably record the National Industrial Recovery Act as the most important and far-reaching legislation ever enacted by the American Congress."

Last August, congressional Republicans and the White House seemed close to a deal on raising the federal minimum wage from \$5.15 to \$6.15 an hour. Contrary to a popular misconception, minimum wage earners are not middle-class teenagers working for gas money. Most people who earn minimum wage in the United States are adults, more than half are female, and about half work full time. There's ample evidence that the increase is needed now more than ever before. In September 2000, the National Low Income Housing Coalition released a study finding that federal minimum wage

earners are unable to pay for "modest" two-bedroom housing in any county in the country. While Republican and Democratic representatives have fought over contrasting wage hike legislation, landlords have apparently not been so

hesitant about rent hikes. The nation saw its last wage hike in 1997 when Congress upped a five-year-old \$4.25 to \$5.15 an hour. Since then, the country's economic expansion has accelerated, but wages at the low end of the pay scale do not reflect the boom.

Proponents of the minimum wage hike frame the debate as an opportunity to help the working poor make up for the earnings depreciation they have experienced over the past decade. Instituted nationally in 1938 at 25 cents per hour, \$5.15 per hour is a con-

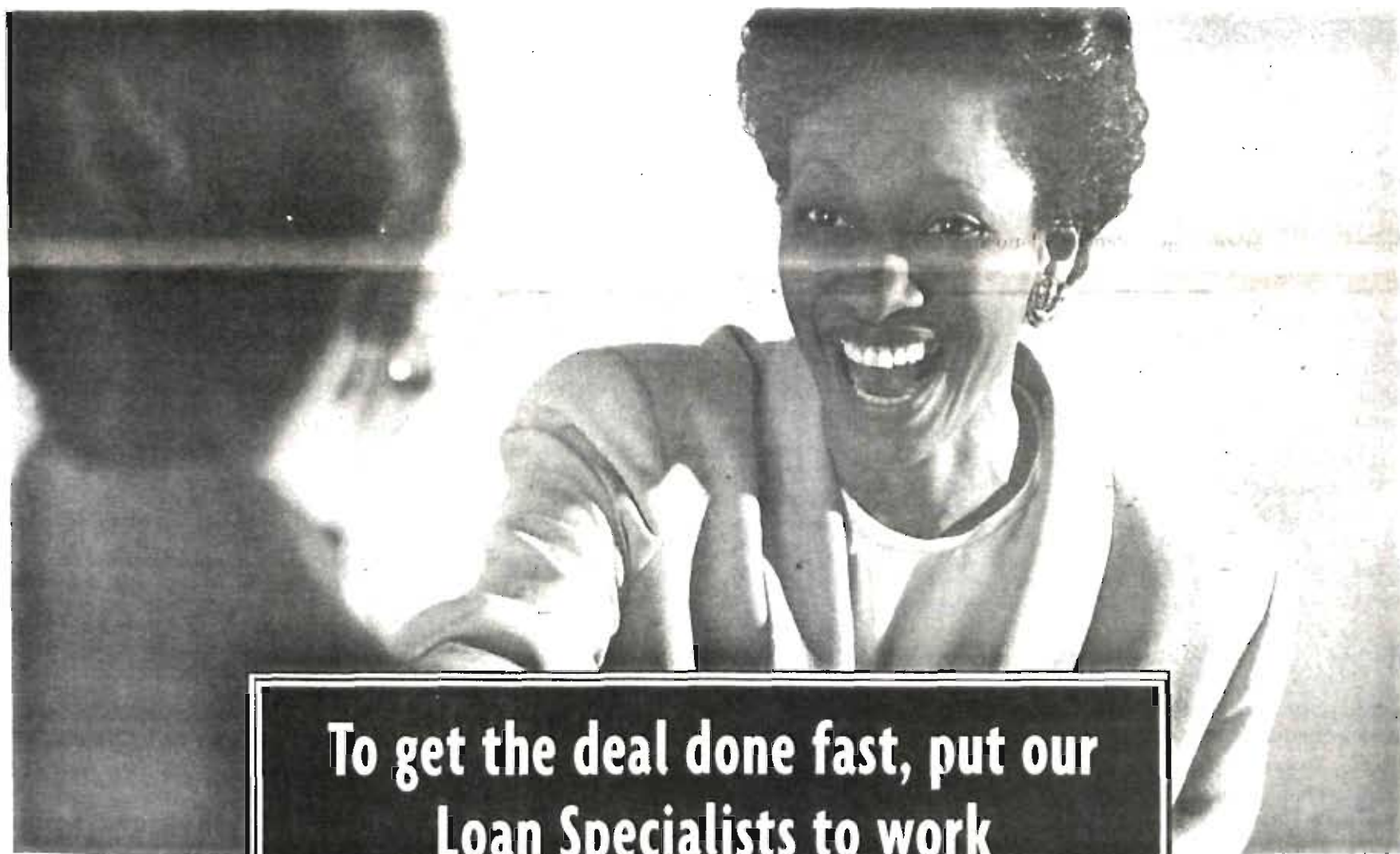
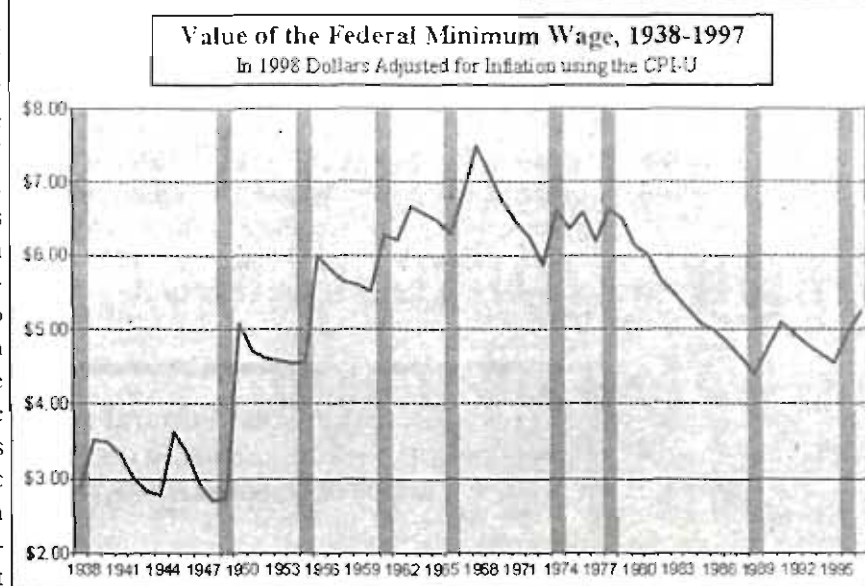
siderable improvement from 63 years ago, but it hasn't kept pace with the rising cost of living. As some economists have pointed out, real wages for people at the bottom of the pay scale have actually decreased when inflation is taken into

consideration. states saw their income gaps increase significantly between the top 20 percent of families and the bottom 20 percent, continuing a trend that began in the 1970s. Critics argue that increasing the minimum wage does not solve the wealth gap

problem since the minimum wage is little more than an "entry-level" wage - not one that sustains a worker over many years. But as John Schmitt reports in *The American Prospect*, April 10,

2000, a recent government study suggests otherwise. The study entitled "Minimum Wage Careers?" followed young people for up to 10 years after they finished high school. In those ten years researchers found that 13.2 percent of all workers had spent half or more of their careers within \$1.50 of the minimum wage.

Surveys of small businesses



**To get the deal done fast, put our  
Loan Specialists to work  
for your business.**

When you need to borrow money to start a new business or help your business grow, think of Comerica. Because when it comes to business loans, our Loan Specialists know how to get the deal done. They can reduce the loan process to a few easy steps - so you'll get a much faster response, and we're an SBA Preferred Lender as well. Comerica is also a leader in providing other business banking services to help your business succeed. From Business Checking Accounts that suit your needs, to low rate commercial mortgages, traditional loans and lines of credit, and more. All of which make Comerica the bank your business can start with, grow with and stay with. To put Comerica to work for you, visit a nearby Comerica branch office, or call us today.

214-589-1361

**Comerica**

We listen. We understand. We make it work.®



Comerica Bank is a Member FDIC. Equal Opportunity Lender.

www.comerica.com





# FLYING

from page 3

When the nearest major hub airport is an hour's drive away or more, your community airport can save you valuable time with on-call charter or air taxi service. The great advantage, especially for the businesses, is the ability to fly on your own schedule, not the airline's. You fly when you want to fly. The time savings translate into more business, more freedom to get things done, and more time with the family at home. When community businesses exploit these advantages, it's reflected in community economic health.

Airports' most evident - often dramatic - social benefit is emergency medical, law enforcement, and disaster relief services. Medical specialists speak of the "Golden Hour" following serious injury, when treatment is most likely to save a life. Medevac airplanes and helicopters, usually based and/or serviced at the local airport, are the vital link in airlifting the injured from accidents or flying the sick to specialized treatment in distant cities.

Less well known are the thousands of "angel flights" flown by volunteer private pilots. Patients unable to travel by airline are often helped by pilots who volunteer their time and their personal or business-owned aircraft. Often, an airport firm also provides fuel and supplies for the trip.

Airborne law enforcement agencies provide rapid response to emergency situations. Including air airborne traffic control, search and rescue, tracking or pursuit of suspects, and emergency evacuation.

Local airports are most appreciated during community emergencies such as floods, earthquakes, or major fires. In Florida recently, hundreds of aircraft were called in from as far away as Canada to help control the worst brush fires in Florida history. Many lives and much property were saved.

When the National Guard or federal assistance is mobilized, the local airport - no matter its size - is the pathway and staging point for outside disaster relief.

As you can see, there are many very good reasons to be supportive of the growth of the McKinney Municipal Airport. We are fortunate to have a new airport manager, Mr. Richard Nasipak, who brings a wealth of experience as a pilot and as, most recently, the manager of the airport in Mansfield, Ohio. His arrival on August first will mark a major step towards realizing and enhancing the benefits that we all want from the airport for the City of McKinney and all of North Texas.

# WWW.HTTP.URL.What? Let Ed explain...



Ed Bamberger

Learning Internet terminology can be



pretty intimidating. So, I'm dedicating this as one of many columns dedicated to demystifying the mystique in Web jargon. Let's call this month's column Internet 101.

## What is the Internet?

Developed in the 60s, the Internet consists of computers throughout the world that are linked by telephone lines and fiber-optic cables. "Inter" refers to the "international" connectivity and "net" stands for "network," meaning multiple computers sharing their resources.

Now that you know what it is, let's learn what it does.

The Internet contains a wealth of information and it can be used for countless applications, including research, advertising, shopping and hosting e-mail. Internet sites are called "home pages," which is the entry point on a Web site. They are created by institutions, companies, businesses, individuals - anyone who wants to disseminate information on the Internet.

## What is the Web?

Likely, you've heard



people refer to Internet as the "Web." That's an abbreviation for the World Wide Web, that's the "www" you often see in an Internet address, otherwise known as a URL, which stands for Uniform Resource Locator, but let's not go there now. Let's keep it simple. To access the Web, you must

have a browser, which is essentially a viewer. It enables you to navigate through the complex structure in which the Internet is built.

The two most commonly used browsers are Internet Explorer and Netscape Navigator. People with America Online (AOL) subscriptions typically use the AOL browser, which is somewhat limiting but does the job quite nicely.

Not to confuse you at this point, do know that the Web and the Internet are not the same. The Web is a collection of stan-

dards and protocols used to access information on the Internet, which is the network that transports the information.

URLs use a standard format for identifying Internet locations and contain a path that leads to the information being sought.

HTTP is used to transfer information within the Web. That is what appears in Web sites like <http://www.netscape.com>.

HTML is the programming

language used to create Web pages. It formats the document, describes it and specifies applicable links to other documents.

## Extensions

Web sites end with a period followed by a three-letter extension. For example, ".com"

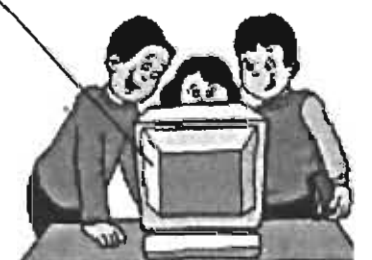
got their name from the period, or dot, at the end, followed by "com" that stands for "commercial," which are for-profit ventures.

You likely have noticed other extensions as well. Like "gov" stands for "government," which could anything from the US Postal Service to the White House. Colleges, universities, schools, libraries

and all places dealing with education use the "edu" extension.

However, the three-character extension limitation is about to end. Watch for new ones coming soon, like "aero," "info," "museum," "coop," "pro" and "name," and I'm sure that this is just the beginning.

I would appreciate receiving your feedback. If there are particular topics you'd like covered, please e-mail your suggestions to: [MONedit@swbell.com](mailto:MONedit@swbell.com).



## Cedar Crest Funeral Home

1302 I Avenue • Plano, TX 75074

Rev. Will O. Spencer -Minority Owned

## Personalized Service

- Pre-Need Burial Insurance •
- Monuments • Life Insurance •

972-424-3730 Office • 972-562-7747 Residence

## ADVERTISEMENT FOR BIDS

The Dallas Area Rapid Transit Authority (DART) is requesting sealed bids from qualified firms interested in providing construction supplies and/or services as listed below.

**DESCRIPTION OF GOODS OR SERVICES:** State Highway 190 Light Station. IFB Construction of the SH190 light rail station will occur south of the intersection of State Highway 190 / President George Bush Tollway and DART's North Central light rail line, partially in Richardson and partially in Plano.

**State Highway 190:** This facility will provide an at-grade light rail station, two parking lots, and at-grade pedestrian crossings. The parking lots will provide approximately 825 parking spaces. In addition, there will be 8 bus bays with 8 bus shelters and two flanking drop-off roadways. Anticipated construction includes earthwork, grading, concrete paving, pavement marking, station platforms with steel canopies, drainage structures, storm sewer lines, electrical work, road work, landscaping, and architectural finishes. There will be a \$75.00 fee for full-size plans and specifications and a \$40.00 fee for half-size plans and specifications. Payment for bid documents is non-refundable.

**Bonds:** Bid Bond @ 5% Bid Price, Performance and Payment Bonds (upon award) @ 100%.

All pre-paid packages will be issued via U.S. Postal Service (First Class) or may be picked up at DART headquarters, 1401 Pacific Avenue, Dallas, Texas in Room 4102 between the hours of 8:00 a.m. and 5:00 p.m. To expedite delivery of documents, bidders may request that their packages be sent next day delivery via Federal Express. Bidders are responsible for submitting their Federal Express account numbers in advance. DART will not pay for any shipping costs other than U.S. Postal Service (First Class). For more information on acquisitions, please call 214-749-2560.

When responding positively to this bid, please indicate the method of delivery you would prefer to receive your documents and which size plans you would like to purchase.



## Wattley Contests Election

After much thought and deliberation, I have reluctantly reached the conclusion that I must file a contest of the June 2, 2001 runoff election for District 1, City Council. As citizens, we must always be able to believe in the integrity of the election process. We must be confident that the rules which govern elections are followed. We must always be certain that the reported election results are indeed the will of the electorate.

In reaching the decision to file this contest, I have consulted with many people, including my campaign manager, supporters, friends, colleagues and family. Those discussions affirm that the voting irregularities, which appear to have occurred in the District 1 election, require that this contest be filed and that the voting procedures be scrutinized.

I have been honored to serve the City of McKinney for 22 years. I have done so with enthusiasm, commitment and dedication. Having participated in many elections, I can accept a loss, even with the small margin of just seven (7) votes. However, when people are allowed to vote who do not live in this district, when unregistered voters cast ballots, then the election results are not about me or my candidacy, rather they are about how elections will be done in McKinney. My political career, and hopefully my legacy to McKinney, is that integrity must be the heart of all that we do.

Pd. Political Adv. for Willie Wattley, File Henry, Texas, 905 Rockwall, McKinney, Texas 75069, 214-548-0544



"DART and I have the same goal: Improve our customers' quality of life."

-Curvie Hawkins, Service Planner

"At DART, I work closely with residents and local businesses in my service areas of South Dallas, Pleasant Grove and Oak Cliff to address their transportation needs. With their help, I prepare high-quality, community-oriented mass transit services and facilities improvements that increase access to employment, schools and other neighborhood destinations."

For career opportunities, visit [DART.org](http://DART.org) or stop by the DART Application Center, 1401 Pacific Avenue (Akard Station), Tuesdays or Thursdays between 8 a.m. and 7 p.m.





## No Stalling at American Airlines Center; Restroom Record Wipes Out Similar Venues

DALLAS, July 10 (PRNewswire) — When American Airlines Center opens later this month, guests, especially women, should get relief at what they don't see: long lines for restrooms. The new regional sports and entertainment venue will not only beat but also exceed the Texas "Potty Parity" law passed under the gubernatorial administration of George W. Bush. In addition, officials said today the building has more "water closets" (toilets) per

capita than any other building in the country. "Male guests too will cheer the end of the long lines," said American Airlines Center Vice President and General Manager Dave Brown, "They will have their own form of 'potty parity' because of the number of 'facilities' in the building." American Airlines

Center is the new home of the NBA Dallas Mavericks

### Here are the numbers for American Airlines Center:

|                  | Women | Men |
|------------------|-------|-----|
| Toilets          | 337   | 96  |
| Urinals          |       | 280 |
| Family Restrooms | 20    |     |

and the NHL Dallas Stars. The building's "Season of

Grand Openings" begins July 28th with the Eagles. Reunion Arena is the former home of both teams. The Texas Potty Parity Law was one of the first in the country that mandated more toilets for women than men in public buildings. Under the law, public buildings must have twice the number of toilets (commodes, water closets, potties) for women than men.

At American Airlines Center, women will have access to three times as many toilets as men. In the spirit of equal opportunity, however, "bonus" urinals and extra toilets for men were added late in the design phase.

Upon opening, American Airlines Center will set a record on the number of "family restrooms" in the building. "Our cus-

tomers will have access to 20 family restrooms," said Brown. "It's important. Families need these facilities for hockey and basketball but also to be able to attend events like Ringling Brothers & Barnum and Bailey Circus as well as events like Disney on Ice." The Ringling Brothers & Barnum and Bailey Circus opens August 1 with a two-week schedule.

## ELECTRICITY from page 3

between the northern and southern regions of the state.

7.+ In advance of retail competition, Texas has adopted rules encouraging generation of power on customers' premises to give customers more control over the reliability and price of electricity.

- California began addressing rules for on-site generation after retail competition began.

8.+ The Texas rules encourage new companies to compete at a retail level.

- California's rules, particularly the regulations on retail rates, discouraged competition at the retail level.

9.+ Texas has learned from California and other states experiences what not to do and what to do.

- California was one of the

first states to deregulate its electric industry.

10.+ Texas has a strong restructuring plan in place.

- California's restructuring plan has contributed to power shortages, high prices in the wholesale market and financial problems for the state's utilities.

*Electric Choice in Texas is Different from California*  
July 10, 2002  
Page 2

For more information, please contact:  
Gary Rasip  
512-322-5386  
gary\_rasip@dal.bni.com  
Karen Springs  
214-224-8426  
karen\_springs@dal.bni.com

**The Gazette**  
MON SERVING PLANO, DALLAS, RICHARDSON, ALLEN, MCKINNEY AND FRISCO

MON-The Gazette  
is looking for  
community writers and  
reporters.

Pay on a contract basis or  
by the hour.

Fax resume to  
972-881-1646 or leave a  
message  
at 972-606-3891

### ICR Services, Inc., National Credit Repair

CREDIT REPORTS REPAIRED LEGALLY  
ASK ABOUT OUR 110%  
GUARANTEE

Do you have bankruptcies,  
Judgements, Repos, Tax  
Liens, Charge Off, Late  
Pays, Foreclosures,  
Student Loans.



Edward "TEX" Harris  
WE CAN HELP  
(972) 205-1008  
E-mail  
bigtexharris@aol.com



**Compass Bank**

Where there's Compass, there's a way.

Call 1-888-273-LEND

**WORD  
100.7**

Notice of Employment  
Opportunity  
**RECEPTIONIST**

KWRD-FM and KSKY-AM in  
Dallas/Fort Worth is seeking a bright  
energetic individual to answer multi-line  
phone system. Must be professional in  
appearance as well as on the phone.  
Qualified candidates should have a minimum  
of 3 years previous receptionist experience.  
Working knowledge of Microsoft Word  
and general office skills a plus.

Serious applicants should fax a resume and cover letter  
to the Human Resources Department at 972-869-4975  
KWRD-FM and KSKY-AM is a subsidiary of Salem Communications  
CORPORATION, AN EQUAL OPPORTUNITY EMPLOYER.

### High School and College Students

Sharpen your  
writing, sales,  
and/or marketing  
skills by becoming  
an **intern** with  
MON The Gazette.

Progressive job  
responsibility and  
pay is offered.  
Minority applicants  
encouraged to  
apply.

Contact:  
Denise Edwards  
(972) 606-3878  
Voicemail  
(972) 516-4197  
Fax  
mon-edit@swbell.net  
Email

## The Grand Getaway

Escape the everyday routine and take in a beautiful scene. The Dodge Grand Caravan is ideal for a getaway. There is plenty of room for seven passengers, lots of luggage and your personal stuff. Even your friends will enjoy the comfort of your getaway means.

**Dodge Grand Caravan See. Compare. Drive.**

**Grand Features:**

- 4-disc, in-dash CD player\*
- Dual power sliding doors
- Power rear hatch\*
- Rear Seat Video™ entertainment system\*\*
- Tri-Zone temperature control
- Movable/removable center console\*

\*available \*\*Must be dealer installed

Always use seat belts. Remember a backseat is the safest place for children 12 and under. Call 800-4-A-DODGE or visit www.4adodge.com



## NAACP president calls on members to recommit to equality

By DEBORAH KONG  
AP Minority Issues Writer

NEW ORLEANS (AP) — NAACP president Kweisi Mfume invoked memories of the civil rights group's founding in 1909 as he asked its members Monday to recommit themselves to fighting for racial equality.

"We found a way to help a nation divided against itself through the confusion and turbulence of the 1960s," Mfume said in his keynote address to the NAACP's 92nd annual convention. "It is now a matter of having still yet a long way to go."

Speaking to about 4,800 people at a packed convention center hall, Mfume mentioned a lengthy list of issues on which he wants to see progress. They include making health care affordable to everyone, cleaning up the environment, reforming the electoral system, ending the AIDS epidemic, removing the Confederate flag from public places and stopping hate crimes.

Mfume said Sunday that the Baltimore-based National Association for the Advancement of Colored People also is preparing to sue the paint industry in an effort to hold it accountable for health problems linked to lead in paint. He didn't say which companies would be sued and made no mention of that effort in his speech. If NAACP members feel they face a difficult task now, they should remember the obstacles the group has already overcome, Mfume said. "Can you imagine 1909?" he asked.

About the time Mfume

spoke on Monday, White House spokesman Ari Fleischer reacted sharply to NAACP board chairman Julian Bond's attack on the Bush administration in his speech to the convention Sunday night. Bush has "appealed the wretched appetites of the extreme right wing, and he picked Cabinet officials whose devotion to the Confederacy is nearly canine in its uncritical affection," Bond said. Fleischer said Bond's remarks were "excessive." "The comments made by Mr. Bond are another reminder about why the tone in Washington needs to be changed," Fleischer said. The spokesman added that "those remarks were not made under Kweisi Mfume's leadership, when Kweisi Mfume was president of the NAACP."

A reporter reminded Fleischer that Mfume is still the NAACP president, but the spokesman seemed not to notice that he misspoke. Bond assailed the civil rights records of Interior Secretary Gale Norton, a former Colorado attorney general, and Attorney General John Ashcroft. The administration's tax cut and its faith-based initiative, which would allow government funds to flow to churches, mosques and synagogues that seek to ease social woes, were also targets of criticism.

Bush has asserted that

church-based groups receiving government funds should be able to refuse employment to people outside their religion.

Critics, including Bond, contend this could amount to government-funded discrimination. Bond also said the Bush administration's tax cut "placed funding for important programs in a lockbox, raiding the treasury for a decade, closing the door on government aid for children, for schools, for the poor." "This is government of the rich, by the rich and for the rich."

Neither Bond nor Mfume has met with Bush since he took office in January. However, Bush addressed the convention through a videotaped greeting on Monday. "We must continue our work to make sure that my party keeps faith with the memory of Abraham Lincoln and Frederick Douglass," Bush said. Bush also said he had selected a diverse and well-qualified group of advisers including Secretary of State Colin Powell, Education Secretary Rod Paige, National Security Adviser Condoleezza Rice and Deputy Attorney General Larry Thompson.

The president also promised to improve the nation's public schools and to work to end racial profiling. "I welcome the president's words, but I will welcome more his actions," Mfume said.



## Success, with a smile

By Brandy Jones

McDonald's is the largest and best-known global food service retailer with more than 28,000 restaurants in 120 countries. This well-known company professes its faith in franchisees that play a major role in its success. The proof is in the pudding of Entrepreneur Magazine naming McDonald's the number one franchise. Nearly 70% of McDonald's worldwide restaurant businesses are owned and operated by independent businessmen and women. McDonald's franchising system is built on the premise that their corporation can be successful only if their franchisees are successful first. Amongst prosperous is Ruben Flores, owner of two McDonald's restaurants in McKinney and Princeton and owner of the prestigious title of the first Hispanic owner in the area.

In the beginning Flores was concentrating his efforts on a career in social work until mentor, Bill Pikard, gave him a bit of advice. "He told me that I wouldn't make any money in social work unless I came from a wealthy family and just wanted to do something for the community. Not that I didn't want to make a difference in the community, but I was trying to get out of the barrio, ghetto, or whatever you want to call it," says Flores.

Pikard was Flores' professor in the school of business at Wayne State University and owner of an automobile supplier plant and several McDonald's restaurants, a suc-

cessful individual. They had fast delivery, good food, good service, a good ambiance, and good people," says Flores. After he completed the required 1500 hours in the training program, he was commissioned in McKinney and later gained ownership of another McDonald's in Princeton.

Now with his flourishing success, Flores is dedicated to giving back to the community. He is chairman of McDonald's public relations committee, which sponsors programs like "Black History Makers of Tomorrow" through the Urban League and the "Hacer"

program that gives scholarships to Hispanic students. Flores also donates time to League of United Latin American Citizens (LULAC), the Rotary Club, and the Chamber of Commerce.

Flores has four sons, Dan, Ruben Jr., Armando, and Rene, all of which have had a part in the success of their father's restaurants. He is also happy to say that Ruben Jr. is now operating the business and will one day own his own McDonald's.

Future plans for Flores include none other than gaining ownership of more McDonald's restaurants and pursuing his interest in real estate.



Ruben Flores shows off his McDonald's. Mr. Flores owns two McDonald's, one in McKinney and one in Princeton.

# It's Fun To Play The New Texas Two Step

## No Matter How You Do It.

**Step 1** Pick 4 numbers from the top section or select Quick Pick (QP)...

**Step 2** Pick 1 Bonus Ball number from the bottom section or select Quick Pick (QP).

\$\$\$\$\$ Match all 5 and you could win big! Match just the Bonus Ball and win \$5.

**Jackpots start at \$200,000!**  
**Drawings every Tuesday and Friday.**



TE





# Arts & Entertainment

## BLACK STARZ!® Presents Fifth Annual Pan African Film Festival

### Emmy-Nominated Actress CCH Pounder Returns to Host This Award-Winning Collection of Films

ENGLEWOOD, Colo., July 3 /PRNewswire/ — BLACK STARZ! announces the return of its widely-celebrated Pan African Film Festival — now in its fifth year — every Wednesday evening in July and August. Acclaimed actress CCH Pounder returns to host the festival that features a strong line-up of films originating from throughout Africa and the African Diaspora.

For this year's Fifth Annual Pan African Film Festival, BLACK STARZ! presents the U.S. television premieres of an impressive list of films from the Ivory Coast, Jamaica, South Africa, Egypt, Belgium, France, Zimbabwe and the United Kingdom. This special collection of films, which have received recognition at many notable domestic and interna-

tional festivals, feature a diverse group of talent, including Angela Bassett and Danny Glover in the acclaimed drama "Boesman and Lena."

Every Wednesday evening in July and August, BLACK STARZ! presents highly-acclaimed films focusing on the African experience around the world. (All times listed are ET/PT.)

— "Third World Cop" (July 18 at 8:00 p.m.) — In Jamaica's highest grossing movie ever, a rebellious cop is transferred to his small hometown to discover that it has been overrun by a ruthless gun runner and drug dealer who has enlisted his childhood friend in a life of crime. Starring Paul Campbell, Mark Danvers and Audrey Reid, raw and authentic dialogue give this film a stylistic

edge.

— "Papa's Song" (July 25 at 8:00 p.m.) — From Curacao, a local Dutch judge finds himself entangled in the mysterious past of his Antilian wife.

— "Boesman and Lena" (August 1 at 8:00 p.m.) — From South Africa, conflict builds between a volatile couple, an alcoholic and her physically abusive husband, after they are evicted from their shanty town residence and allow an elderly tribesman to join them on a long, reflective walk. This final film from late director John Berry, a victim of the Hollywood blacklist, stars Danny Glover and Angela Bassett, in a 2001 Image Award-nominated role.

— "Fallen Angels Paradise" (August 8 at 6:35

p.m.) — In this Egyptian comedy, a man dies of a drug overdose and his girlfriend decides to contact the family that he abandoned ten years ago, while his disbelieving friends take his corpse on one last trip. Starring

Mahmoud Hamida, Leblela, Safwa and Amr Waked. It was honored with Best Film, Best Director, Best Actor, Best Supporting Actress, Best Editing, Best Cinematography and Best Music at the 6th Festival of Egyptian Cinema 2000, received the Special Jury Prize at the 5th Festival of Arabic Films in Paris (2000) and won Second Prize for Best Film at the Milano African Festival 2000.

— "Yellow Card" (August 15 at 6:20 p.m.) — From Zimbabwe, a teenage African soccer star learns tough

lessons about love and sex. Starring Leroy Gopal and Kasamba Mkumba, the film was directed by John Riber and won the Jury Award at the 2001 L.A. Pan African Film Festival.

— "Adanggaman" (August 22 at 6:30 p.m.) — From the Ivory Coast. This controversial film exposes the untold story of slavery in Africa and the ruthless rulers that fed the transatlantic slave trade through the story of a tribesman who defies a cruel African King responsible for murdering and enslaving neighboring tribes for profit. Winner of the award for Best Cinematography at FESPACO 2001, this film stars Ziable Honore Goore Bi, Rasmane Ouedraogo and Albertine N'Guessan, who was honored as Best Actress at FESPACO 2001.

— "The Squalor" (August 29 at 6:20 p.m.) — From France comes an unflinching look at rites-of-passage, as a tough young femme fatale (Esse Lawson) positions herself as the leader of a Paris girl gang and seduces a local crime boss (Tony Mpoudja).

BLACK STARZ!, formerly BET Movies, is the only movie channel created exclusively to meet the unique entertainment choices of the African American community. The premium channel features exclusive new hit movies, original productions, classic movies, independent movies and films from Africa and the African Diaspora. 24-hours-a-day, seven days a week, uncut and commercial free.

## Marlon Brando, director, had a "Score" to settle

LOS ANGELES, (Reuters) -

Veteran actor Marlon Brando reportedly made life difficult for director Frank Oz on the set of his latest movie, the upcoming crime drama "The Score".

In behind-the-scenes accounts of the production appearing in media outlets this week, the relationship between the two men was alternately described as a "difference in creative interpretation" and as a battle will.

According to the July 16 issue of Time magazine, the tension began when Oz, a former member of the late Jim Henson's Muppet troupe, asked Brando to tone down his characterization of an aging homosexual crook who masterminds the heist of a priceless French scepter.

Brando subsequently refused to come to the set if Oz were present, forcing costar Robert De Niro to direct a major scene with Brando while Oz watched the action by monitor and issued instructions to DeNiro through an assistant director, Time said.

At other points, Brando, 77, referred to Oz

as "Miss Piggy" and told him, "I bet you wish I was a puppet so you could stick your hand up my a-- and make me do what you want," the magazine said. In an interview with Newsday, Oz acknowledged a "rift" developed between him and Brando but insisted that it "wasn't because (Brando) was difficult." "I think it was as much my fault as his," Oz, whose previous directing credits include the comedies "Bowfinger" and "In & Out," told the newspaper.

"We had a difference in creative interpretation of the role," Oz said. "He felt one way, quite sincerely and earnestly, and I felt the other, and the producers backed me, which I'm grateful for, and Marlon did come around to my side."

As quoted in Time, Oz said: "I was combative (with Brando) when I should have been nourishing and gentle."

"The Score," which also co-stars Edward Norton and Angela Bassett, opens Friday.

## NAACP must embrace hip-hop generation to endure

NEW ORLEANS (Reuters) -

The hip-hop generation is not the NAACP's traditional constituency, but it must be embraced for the venerable civil rights group to survive, Kweisi Mfume, head of the National Association for the Advancement of Colored People (news - web sites), said Monday July 9th.

In the keynote address in

New Orleans at the NAACP's 92nd annual convention, Mfume said great strides toward equality had been made in the past four decades. "In order to do what we have to do, we have to remind ourselves in a very special way to embrace all

of us — even if we can't understand us, even when we don't fit the mold. Without a new generation, there will not be

a civil rights movement," Mfume said.

Earlier generations condemned jazz and rock as "evil music conjured up by those dark people, and too many are saying the same about hip-hop," he said.

Introducing boxer Leila Ali, producer-director John Singleton and hip-hop musician-actor Tyrese as examples of

young people who have "charted a different course," Mfume said, "We must embrace hip-hop and the generation it represents (because) it affects the hearts and minds of millions of our young people."

"It is up to us to understand and reach out, to criticize when necessary, but to applaud and embrace when possible."



Moving into a new home is a lot of work. Getting a low down payment mortgage from Chase is the easy part.

### FLEXIBLE MORTGAGE SOLUTIONS

Just one call can put Chase to work for you.

Experienced specialists will help you find the mortgage suited to your needs and help you with down payment and closing cost assistance programs.

We'll work with you from your first call through closing.

Call Chase today, and get moving.

Austin: (512) 346-4320  
Dallas: (972) 663-1600  
El Paso: (915) 546-6603

Houston: (713) 871-0926  
Rio Grande Valley: (210) 822-4720  
San Antonio: (210) 822-4720  
Tarrant County/Hurst: (817) 656-1828



THE RIGHT RELATIONSHIP IS EVERYTHING.®

All loans are subject to credit and property approval. Program terms and conditions are subject to change without notice. Not all products are available in all states or for all loan amounts. Other restrictions and limitations apply. For down payments less than 20%, mortgage insurance (MI) is required and MI charges apply. CMMC Corporate headquarters: 343 Thornall Street, Edison, New Jersey 08837; (732) 205-0600. ©2001 J.P. Morgan Chase & Co. All Rights Reserved.



## 'Sopranos' boss takes the fifth

By Cynthia Littleton  
LOS ANGELES (The Hollywood Reporter) —

Perhaps it's an offer he just can't refuse. David Chase, creator and executive producer of "The Sopranos" (news - Y! TV), is in talks with HBO and Brad Grey Television to commit to a fifth season of the acclaimed drama series.

Chase previously indicated in published reports that the upcoming fourth season of "Sopranos" would be the last for the hit mob drama. Representatives for Chase declined comment on the possibility of a new deal for a fifth season, as did HBO. Last year, Chase struck a two-season deal

with HBO that covered the third and fourth seasons of the show.

The fourth season of "Sopranos" is set to begin production in October and is expected to premiere early next year. One source said Chase had warned to the idea of a fifth season because he wants to write the final chapters of the story of Tony Soprano and crew over two 13-episode seasons.

The contractual status of series star James Gandolfini, who won the drama actor Emmy last year for his portrayal of the neurotic mob boss, for a fifth season was unclear Monday. Reps for Gandolfini declined comment on the matter.



## Around The Town

**July 15th**

- The Texas Instruments Jazz Band will perform from 7:30 p.m. - 9:30 p.m. at the Allen Summer Sounds Concert Series at the Joe Farmer Recreation Center in Allen. For more information call, 972-727-5585.

**July 16th - 20th**

- Youngsters who have completed grades 3, 4, and 5 are invited to be a part of a special weeklong camp at the Little Elm Community Library in Frisco. This camp will be held from 10:15 a.m. to 2:00 p.m. Cost is \$15. For more information call, 972-294-5801.

**July 17th - 22nd**

- Rodgers & Hammerstein's beloved family musical "Cinderella" will be at the Music Hall at Fair Park. Three-time Tony-award winner Eartha Kitt plays the fairy Godmother, and Jamie-Lynn Sigler of The Sopranos will make her debut as Cinderella. For more information call, 214-565-1116.

**July 18th**

- McKinney Career Fair at McKinney High School North from 10 a.m. - 6 p.m. Resume Critiques will be provided as well as free presentations on interviewing skills, resume writing, and dressing for success. For more information, call Tim Culberson at 972-543-2283.

**July 18th**

- Celebrate National Poetry Month and attend a brand new Poet's Corner at the Plano location of Barnes & Noble at 801 W. 15th St., hosted by Kathy Steinkopf and Toby Tregaskis. Poets Maryam Baig, J. Paul Holcomb, and Crosstie Charlie are the featured guests at this open-mike poetry celebration. So whether you have verse of your own to share, or just enjoy hearing local poets, lend this Poet's Corner your ear. For more information call, 972-422-3372.

**July 18th & Aug. 13th**

-17th - New students in the McKinney School District can register from 8 a.m. - 1 p.m. Each school will hold its own registration. For more details call the respective school office.

**July 19th - 21st**

- The Plano Public Library System presents the "18th Annual Friends Book Sale" at the Plano Centre in Plano. For more information call 972-964-4200.

**July 19th**

- The University of Dallas 16th National Print Invitational Exhibition will be held at the Spring Creek Gallery in Plano from 9 a.m. to 9:30 p.m. For more information call, 972-881-5790.

**July 20th**

- "A Flowering of Their Souls - "African-American heritage told through quilting." In this cultural exhibition from the Black Academy of Arts and Letters, eleven African American women quilt makers have dramatically captured on cloth the moral and emotional texture of a peoples' history. These artists have preserved a tradition, which has been expressed and passed on to many generations throughout the Diaspora. This will be on display at the James E. Kemp Gallery in Dallas. For more information call, 214-743-2449.

**July 21st**

- Summer Sounds Concert Series  
Joseph Vincelli and his Jazz band return to perform his latest hits from his recently

recorded CD of jazz music.

This free concert will be held at the Towne Lake park area, and parking will be provided at McKinney High School. For more information call 972-547-7480 from 8:00 a.m. - 5:00 p.m.

**July 21st**

- Richardson Public Library is holding their end of summer program from 2:00 p.m. - 3:00 p.m. in the Basement Program Room with special guest Magician Gerald Edmundson with "Reading is Magic."

**July 23rd**

- McKinney Storytelling Guild presents, "Travel and Nature Stories," at 7:00 p.m. in the historic Foote Chapel of Chestnut Square Historical Park. Free, donations accepted. For more information call Adah Leah Wolf at 972-548-7186 or email eflat@home.com.

**July 23rd - 26th**

- A "Teen Theatre Camp" will be held from 12 p.m. - 2:30 p.m. as well as performance workshops. This event is sponsored by the Elm Community Library in Frisco. For more information call, 972-294-5801

**July 25th**

- The Allen Public Library Presents "The Magical Mysterious Suitcase Science Show" at 2 p.m. Appropriate for ages 5 and up. For more information call, 972-727-0190.

**July 25th - Aug 31st**

- "Memory and Culture-Faces of the Richland Community" a history told through photographs and stories will be held at the Performance Hall at Richland College. For more information call, 972-238-6106.

**July 26th - Aug 15th**

"Sankofa" At the Dallas African-American Museum an exhibit called "Sankofa: A Century of African-American Expression in the Decorative Arts" looks at the stereotype of African-Americans, seen solely as agricultural workers and unskilled urban laborers in the early 20th century. This exhibit will help to illustrate such stereotypes and show the earliest stages of blending among African and European cultures. For more information call, 214-565-9026.

**July 26th - 28th**

- McKinney's Mockingbird Society will be hosting "The Texas Poetry Society Annual Conference." For more information contact Imogene Ogle at 972-529-6321 or imoweb@juno.com.

**July 28th**

- The Christopher A. Parr Library will be holding free hands-on Internet Classes for beginners throughout the summer. For more information call, 972-941-7377.

**July 28th**

- At the Six Flags Music Mill Amphitheater the Christian performance group Mary Mary and Fred Hammond will take the stage and delight audiences with their soulful rendition of "Shackles."

**Aug 1st**

- Career Fair at the Plano Centre from 10 a.m. - 3 p.m. For more information please call Marsha Kline at 972-543-2284.

Community Calendar Sponsored by Southwestern Bell Telephone

Your friendly neighborhood  
global communications company.<sup>SM</sup>



# Southwestern Bell



**NOW, MORE ROOM FOR  
YOUR COMFORT ZONE**

ONLY AMERICAN AIRLINES HAS MORE ROOM THROUGHOUT COACH FOR MORE COACH PASSENGERS.  
YOU CAN STRETCH OUT, RELAX AND ENJOY THE EXTRA COMFORT WITHOUT PAYING MORE.

MORE ROOM ONLY ON **American Airlines**.

**CITY OF  
PLANO, TEXAS**

**Plano**

**24 HOUR  
CAREER INFORMATION HOTLINE**  
(972) 941-7116  
Home Page: [www.plano.tx.org](http://www.plano.tx.org)  
FAX (972) 941-7230

**POLICE HOTLINE**  
(972) 941-7299  
**FIRE HOTLINE**  
(972) 941-7402

**AA / EOE / ADA**